

ESTIMATE

Name of Work :--

PROPOSED CONSTRUCTION OF RICE MILL SHED FOR THE TIRODA
PRODUCER COMPANY LIMITED, AT- CHIREKHANI, POST-
KAWLEWADA , TAH.-TIRORA , DIST.- GONDIA (M.S.) . UNDER Hon.
BALASAHEB THACKERAY AGRIBUSINESS RURAL
TRANSFORMATION (SMART) PROJECT

AREA OF PROPOSED RICE MILL SHED :- 400.00 SQ. MT.

Estimated Cost

Rs.- 7550700.00

*Rs. Seventy Five lakh Fifty thousand Seven
Hundred Only*

ESTIMATE

TO WHOM SO EVER IT MAY CONCERN

Name of Work:-

PROPOSED CONSTRUCTION OF RICE MILL SHED FOR THE TIRODA PRODUCER COMPANY LIMITED, AT- CHIREKHANI, POST- KAWLEWADA , TAH.-TIRORA , DIST.- GONDIA (M.S.) . UNDER Hon. BALASAHEB THACKERAY AGRIBUSINESS RURAL TRANSFORMATION (SMART) PROJECT

Estimated Cost Rs.

7550700.00

Estimate Prepared By:- Mr. Vishal M. Tembhare,
Civil Engineer, Planner
Regd. No. MCT 11 /

GENERAL REPORT

Necessity :- There is need to plant Shed Building on his own land in Village. Therefore on Request of owner this estimate have been prepared

Provisions :- *Following provisions are made in the estimate.*

CC M10 for Foundation on 80 mm soling
CC M20 For Column Footing, RCC Column, Beam, Chajja, With TMT Reinforcement of Various sizes.
BBm In Foundation & In Superstructure in CM 1:5
Cement Plaster in CM to Wall surfaces
C.C. Flooring for shed and Room
White wash to internal /External wall surfaces,
and other necessary provisions are made in estimate.

Rates & Specification:

The rates are adopted for preparation of the estimate as per current State Scheduled Ratej SSR) of Govt of Maharashtra for year 2022-2023 w.ef. 08-06-2022) And work will be executed as per direction of Engineer Incharge, Standard specification.

Prepared By

Signature of Owner

Sanctioning Authority

ABSTRACT SHEET

Name of Work :-

PROPOSED CONSTRUCTION OF RICE MILL SHED FOR THE TIRODA PRODUCER COMPANY LIMITED, AT- CHIREKHANI, POST- KAWLEWADA , TAH.-TIRORA , DIST.- GONDIA (M.S.) . UNDER Hon. BALASAHEB THACKERAY AGRIBUSINESS RURAL TRANSFORMATION (SMART) PROJECT

ABSTRACT

Sr no.	SSR Item No.	Item of Work	Quantity	Rate	Unit	Amount
(A) (B) CIVIL WORK OF WH BUILDING						
1	SSR Item No. 21.01 Page No.115 (232.00)	Excavation for foundation in earth, soil of all types , sand gravel and soft murum, including removing the excavated material up to a distance of 50 m beyond the building area and stacking and spreading as directed, dewatering preparing the bed for the foundation and necessary back filling, ramming, watering including shoring and strutting etc complete (Lift upto 1.5 m)				
			87.48	232.00	Cum	20295.36
2	SSR Item No. 21.40/ Page No.118 (1322.0)	Providing soling using 80 mm size trap metal in 15 cm. layer including filling voids with Crushed sand/grit, ramming. watering etc. complete				
			61.89	3804.44	Cum	235456.79
3	SSR Item No. 21.37/ Page No.117 (550.00)	Filing in plinth and floors with contractors material /brought from outside and approved by Engineer incharge in layers of 15 cm to 20 cm including watering and compaction etc complete				
			436.8	550.00	Cum	240240.00
4	SSR Item No. 24.01/ Page No.131 (5538.0)	Providing and laying Cast in situ/ Ready Mix cement concrete in M-10 of trap/ granite/ quartzite/ gneiss metal for foundation and bedding including bailing out water, formwork, laying pumping, compacting, roughening them if special finish is to be provided, finishing if required and curing complete with fully automatic micro processor based PLC with SCADA enabled reversible Drum Type mixer/concrete Batch mix plant (Pan mixer) etc complete. With natural sand/V SI quality Artificial Sand				
			59.592	7638.14	Cum	455172.04
5	SSR Item No. 25.11/ Page No.133 (6666.0)	Providing and laying in situ/ Ready Mix cement concrete M 20 of trap/graniite /quartzile gneiss metal for R.C.C. work in foundations like raft, strip foundations, grillage and footings of R.C.C. columns and steel stanchions etc including balling out water, formwork, laying/pumping cover blocks, compaction and curing roughening the surface if special finish is to be provided (Excluding reinforcement and structural steel) etc. complete, with fully automatic micro processor based PLC with SCADA enabled reversible Drum Type mixer concrete Batch mix plant (Pan mixer) etc. complete. With natural sand/V S. I quality Artificial Sand				
			14.976	8434.73	Cum	126318.52

6	SSR Item No. 25.31/ Page No.154 (12987.0)	Providing and laying Cast in situ/Ready Mix cement concrete M-20 of trap/ granite /quartzite gneiss metal for R.C.C. columns as per detailed designs and drawing or as directed including centering, formwork, cover blocks, laying/pumping, compaction and roughening the formed surfaces. with cement mortar 1:3 of sufficient minimum thickness to give a smooth and even surface or roughening if special finish is to be provided and curing etc complete (Excluding reinforcement and structural steel) with fully automatic micro processor based PLC with SCADA enabled reversible Drum Type mixer/ concrete Batch mix plant (Pan mixer) etc complete. With natural sand/V.SI quality Artificial Sand				
			8.64	14376.47	Cum	124212.70
7	SSR Item No. 25.50/ Page No.135 (11483.0)	Providing and laying Cast in situ/Ready Mix cement concrete M-20 of trap/ granite /quartzite/ gneiss metal for R.C.C. beams and lintels as per detailed designs and drawings or as directed including centering, formwork, cover blocks, laying/pumping, compaction and roughening the surface if special finish is to be provided and curing etc. complete (Excluding reinforcement and structural steel) with fully automatic micro processor based PLC with SCADA enabled reversible Drum Type mixer/ concrete Batch mix plant (Pan mixer) etc complete With natural sand/V.SI. quality Artificial Sand				
			5.47515	11483.00	Cum	62871.15
8	SSR Item No. 26.05/ Page No.137 (13111.0)	Providing and laying Cast in situ Ready Mix concrete M-20 of trap/ granite/ quartzite gneiss metal for R.C.C. chajja as per detailed design and drawings including centering, formwork, cover blocks compacting, curing, finishing and toughening the surface if special finish is to be provided and curing complete. (Excluding reinforcement and structural steel) with fully automatic micro processor based PLC with SCADA enabled reversible Drum Type mixer/ concrete Batch mix plant (Pan mixer) etc complete. With natural sand/VS1 quality Artificial Sand				
			(SSR Item No. 26.05/ Page No.137) 13111.0	5.87376	14493.03	Cum
9	SSR em No. 24.16/ Page No.132 (6030.0)	Providing and Moulding Cast in situ/Ready Mix cement concrete M-15 of trap/ granite/quartzite/gneiss metal for copings to plinth or parapet , moulded or chamfered as per drawing or as directed including steel centering, plywood/ steel formwork compacting roughening them if special finish is to be provided, finishing uneven and honeycombed surface and curing etc complete The Camant Mortar 13 plaster is considered for rendering uneven and honeycombed surface only Newly laid concrete shall be covered by gunny bag, plastic, tarpaulin etc (Wooden centaning will not be allowed)				
			2.81451	7836.89	Cum	22057.01

10	SSR Item No. 26.33/ Page No.139 (71778.0)	Providing and foong in position TMT-FE-500 bar reinforcement of various diameters for RCC pile caps footings, foundations, stats, beams columns, canopies staircase newels chajjas, litels pardis, copings, fins, wiches Jete an per detailed designs, drawings and schedules including cutting bending, hooking the tiers, biriding with wires or tack welding and supporting as required complete				
			7.5	71942.99	MT	539572.43
11	SSR Item No. 27.01/ Page No.144 (7343.00)	Providing second class Burnt Brick masonry with conventional/ S type bricks in cement mortar 1:6 in foundations and plinth of inner walls in plinth edernal walls including bailing out water manually, striking joints on unexposed faces, raking out joints an exposed faces and watering etc. Complete				
			37.1864	7523.15	Cum	279758.87
12	SSR Item No. 32.03/ Page No.153 (257.00)	Providing internal cement plaster 12mm thick in single coat. cement mortar 1:5 without neeru finish to concrete or brick surtaces, in all positions including scaffolding and curing etc.				
			326.32	265.02	Sqm	86481.33
13	SSR Item No.39.20/ Page No. 180 (4485.0)	Providing and fixing steel window of various sizes as per detaled drawing without hot dip zinc coating without ventilators.				
			5.4	4485.00	Sqm	24219.00
14	SSR Item No. 40.01/ Page No. 192 (1845.0)	Providing and fixing mild steel grill work for windows, ventilators etc. 20kg/Sqm as per drawing including fixtures, necessary welding and painting with one coats of anticorrsvive paint and two coats of all painting complete.				
			6.48	1845.00	Sqm	11955.60
15	SSR Item No. 33.15 Page No. 157 (560.00)	Providing and lying cement concrete flooring 40mm thick with M15cement concrete laid to proper level and slope in alternate bays including compactions, fiting joints, marking lnes to give the appearance of tiles of 30cmx 30cm or other site laid dagonaly square atc. Sishing smooth (with extra cement in any colour as directed and curing etc. complete. With Natural Sand				
			374.05	560.00	Sqm	209468.00
16	(SSR Item No. 35.14/ Page No. 276) 78.00	Providing and applying two coats of waterproof cement paint of approved manufacture and of approved colour to old plastered surfaces including scaffolding if necessary,cleaning and preparing the surface, watering for two days etc. complete.				
			326.32	78.00	Sqm	25452.96
Total amount-						2548660.32
(B) CIVIL WORK OF ABOVE PLINTH OF WH BUILDING						
17	SSR Item No. 23.04/ Page No.129 (105909.0)	Providing structural steel work in trusses, other similar trussed purlins and members with all tracing gusset plates eto, as per detailed designs and drawings or as drected including cutting, fabricating, hoisting, erecting fixing in position, Making siveted bolted/welded connection and one cont of anticorrosive paint and over 2 costs of oil painting approved quality and thade etc complete				
			13.9	105909.00	MT	1472135.10

18	(SSR Item No. 23.02/ Page No.173) 97759.0)	Providing and fabricating structural steel work in rolled sections, fixed with connecting plates or angle cleats in main and cross beams, hip and jack rafters, purlins connecting to truss members and the like, as per detailed designs and drawing or as directed including cutting, fabricating, hoisting, erecting, fixing in position, making riveted/ bolted/ welded connections and one coat of anticorrosive paint and over it two coats of oil painting of approved quality and shade etc. complete.				
			7.68	97923.99	MT	752056.24
19	SSR Item No. 38.36/ Page No.174 (996.0)	Providing and fixing colour coated Zinalume (R) AZ150 (min 150 gms/sq.mt total on each side) profiled sheets for roofing . The feed material is manufactured out of nominal 045 mm Base Metal Thickness (BMT) (0.5 mm TCT), H strength steel with min 550 MPa yield strength, metallic hot dip coated with Aluminium-Zinc alloy (55% aluminium				
			1242	996.00	Sqm	1237032.00
20	SSR Item No. 39.25 Page No.181 (4730.0)	Providing and Fixing rolling shutter fabricated from steel laths of minimum thickness 0.9 mm with lock plate of 3.15 im thickness red with 35 x 35 x 5 mm angle section had with sliding bet and handles for both sides, deep MS channel section of eph and hickness hot less than 65 mint and 3.15 mm respectively with hond at aangements MS. Bracket plate 300 x 300 x 3. 15 mm male and shape with square bar, suspension shaft of in 32 mm diameter, hood Cover of M.S. sheet not less than 0.9 mm thickness and of any size at top and safety devices including mechanical gear operation arrangement consisting of worm gear wheels and warms high grade cast iron or mid steel and one coat of red lead primer etc. complete (I.S. 62481979) (Without mechanical gear)				
			14.00	4730.00	Sqm	66220.00
21	Building (Bd- R : Rofing and ceiling) Page No. 672 (9702.0)	Turbo Ventilator Supply & Fixing of turbo ventilator with 610 mm throat, having base ring & top plate in stainless steel of 0.8 mm thick, rotated using twin bearings of SKF - 600122 & 600322 permanently lubricated & sealed. Fixed in FRP base plate of 2mm thk clear 1.020 mtr wide & 1.7 mtr long.				
			12.00	9702.00	Nos.	116424.00

Total amount- 3643867.34

PROPOSED CONSTRUCTION OF RICE MILL SHED FOR THE TIRODA PRODUCER COMPANY LIMITED, AT-
CHIREKHANI, POST- KAWLEWADA , TAH.-TIRORA , DIST.- GONDIA (M.S.) . UNDER Hon. BALASAHEB
THACKERAY AGRIBUSINESS RURAL TRANSFORMATION (SMART) PROJECT

ELECTRIFICATION ABSTRACT SHEET

Sr no.	Item of Work	Quantity	Unit	Rate	Amount
1	Supplying, erecting & terminating XLPE armoured cable 3 core 6 sq. mm. copper conductor continuous 5.48 sq. mm. (12 SWG) G.I. earth wire complete erected with glands & lugs, on wall/ trusses/pole or laid in provided trench/pipe as per specification no. CB-T/CU	60	RMT	290.00	17400.00
2	Making french of suitable width and depth In hard murum /tar road for laying provided LT cable up to and including 16 sq. mm complete as per specification no. CW.EXNCIR	10	RMT	205.00	2050.00
3	Making trench of suitable width and depth In soft sol for laying provided LT cable up to and including 14 sq.mm complete as per specification no, CW-EXN-CTR	10	RMT	175.00	1750.00
4	Supplying & erecting mains PVC unarmoured cable 1100 Volt grade ISI mark 3 core 6	200	RMT	135.00	27000.00
5	Supplying erecting weatherproof powder coated distribution board 4 way with 2 x 6/10 Amp S. P. M. C. B. with industrial two pin plug socket 10 A and 3 pin plug top 10 A with top cover necessary connection etc complete with approved make.	6	NOS.	1310.00	7860.00
6	Providing point wiring for street light with PVC unarmoured cable 1100Volt grade ISI mark 3 core 1.5 sqmm stranded/solid copper erected on wall with G. 1. Saddle duty painted @ 0.25 m C/C rigidly grouted in the wall with the help of plated screw including 4"x 4" M. S. box 2 way with epoxy painting. 7 Supplying & erecting 10-12W, 230v Integral type LED Lamp suitable for 8-22/E-27 base.	6	NOS.	1225.00	7350.00
7	Supplying & erecting 10.12W, 230V integral type LED Lamp suitable for B-22/E-27 base.	6	NOS.	230.00	1380.00
8	Supplying and erecting LED street light fitting suitable for 20 to 25W, with PF> 0.95 class IP 45 and above housing of pressure die cast aluminium alloy and heat sink extruded aluminium complete as per specification No FG-ODF/FLS	2	NOS.	2015.00	4030.00
9	Supplying and erecting street light Wall bracket made hom 40 mm. dia 8' class G.I. pipe 1.2 m in total length complete as per specification no. FG-BXT/WB	10	NOS.	715.00	7150.00
10	Providing earthing with galvanized iron earth plate size 60 x 60 x 0.6 cm complete with all materials, testing & recording the results as per specification no. EA-EP	6	NOS.	4350.00	26100.00
11	Providing pipe type earthing with 40mm, dia. G.I. pipe or 20 mm dia. G.I. Rod complete with all materials or per specificallon no. EA-EP	5	NOS.	1450.00	7250.00
12	Supplying, erecting & marking DPMCB LA lo 32A, C-series (for motor/power) in provided distribution board as per specification no. SW-SWR/MCB	6	NOS.	495.00	2970.00

13	Supplying, erecting & marking SPMCB 6A to 32A, B-series (for lighting) in provided distribution board as per specification no. 5W- SWR/MCB	5	NOS.	165.00	825.00
14	Supplying and erecting GI sheet 1.6 mm (16 SWG) to be used for fabrication of boxes panel boards etc. Including culling bending, delling, welding, riveting etc. and palling with one coal of red lead point and 2 coats of enamel paint.	4	SQM	2270.00	9080.00
15	Supplying and erecting marine plywood 18/19 mm thick fixed to well or on provided panel board with necessary materials such screws, wat fasteners, supports, nut bolts etc.	5	SQM	1345.00	6725.00
16	Supplying and erecting triple pole and (neutral dishibulion beard (TPNOB) surface/flush mounted suitable for SPMC of 12 ways on Iren/GI frame (hertzional busbar type) as per specification no. SW.SWR/MCBDA	5	NOS.	4735.00	23675.00
17	Supplying & erecting GI. pipe 'A' class 25 10.00 mm dia. erected for enclosing XLPE armoured cable on wall/ pole as per specification no. CB-CE	10	RMT	198.00	1980.00
18	Supplying & erecting G.I. pipe 'A' class 40 mm dia, erected for enclosing XLPE armoured cable on woll/pole as per specification no. CB-CE	10	RMT	305.00	3050.00
19	Supplying and laying (including excavation of suitable width & depth up to 90 cm) 75 mm outside dia. double woll corrugated pipes (DWC) of HDPE for enclosing cable below ground/road surface, to required depth complete.	20	RMT	230.00	4600.00
20	Supplying & erecting 18 guage M.S.Box powder coated (4"x4" 3 way for mains connection.	4	NOS.	85.00	340.00
21	Supplying & erecting Siemens type brass cable glands for 3 to 4 core & sq. mm./2 fo 4 core 10 sq mm. for XLPE armoured cable as per specification No. CB.GL	3	NOS.	60.00	180.00
22	Supplying shockproof type hand lamp with lamp holder, bulb/ lamp 100 W guarded glass and 30 mtr. 3 core PVC flexible	6	NOS.	1575.00	9450.00
23	Point wiring for independent plug in 20 mm ISI marked HMS PVC conduit with 1.5 sqmm (2+1E) FRLSH grade copper wire, flush type switch earthing and required accessories as per specification No: WG-PW/SW	3	NOS.	496.00	1488.00
24	Supplying and erecting Street üght bracket made hom 25 mm. dia B' class G.I. Pipe, 0.6 m in length along with pole cap of 300 mm length and 80 mm dia duly welded with provided leads as per specification no. FG-BKT/BPC	2	NOS.	466.00	932.00
25	Supplying & erecting mains with 2 x 2.5 Sq.mm stranded copper PVC insulated wire with 2 x 1.5 Sqmm copper PVC wire in PVC casing-casing 20 mm on wall/ceiling	5	RMT	135.00	675.00
26	Supplying & erecting main with 2 x 4.00 Sq.mm stranded copper PVC insulated wire with 2 x 1.5 Sqmm copper PVC wire in PVC casing-caping on wall/celing	6	RMT	155.00	930.00
27	Supplying and erecting double pole switch surface type/ flush type 240V, 32A with Indicator lamp & fuse as per specification no. SW-SWR/BDP.	1	NOS.	177.00	177.00

28	Supplying and erecting double pole metal elad switch with HC type fuse and neutral nk 240V, 32A on iron/G1 trame as per specification ne, SW-SWR/MDP	6	NOS.	785.00	4710.00
29	Supplying & erecting 3W, 230V Integral type LED Lamp suitable for B-22/E-27 base.	4	NOS.	125.00	500.00
30	Supplying and erecting T8 Fluorescent tube day light 1200 mm 36 W	10	NOS.	45.00	450.00
31	Supplying & erecting ready to use regular 1.00 T8 LED 18/20 tube light with polycarbonate body, heal sink, Integrated HF	6	NOS.	635.00	3810.00
32	Supplying and erecting regular/ standard model ceiling fan of 900 /1050 mm, sweep complete erected in position as per specification no. FG-FN/CF	10	SQM	1895.00	18950.00
33	Supplying and fixing wiremesh (Jali) cover suitable for fitting/fan or for any purpose. complete with necessary materials. The Jali cover shall be made from good quality G.I. wire mesh	5	NOS.	450.00	2250.00
34	Supplying and erecting ding dong/electronic musical type call bell with heavy duty coll suitable to operate on 230V A.C. supply erected on polished double wooden block/sunmica block of suitable size	1	NOS.	135.00	135.00
35	Supplying and erecting street light Wall bracket made from 25 mm. dia "B" class G.I. pipe 1.2 m in total length complete as per specification no. FG-BKT/WB	2	NOS.	575.00	1150.00
36	Supplying & erecting CRCA sheet metal one wayenclosures suitable for DP MCB/TP MCB /FP MCB erected on angle iron/GI frame complete.	2	NOS.	365.00	730.00
37	Supplying, erecting and marking four pole isolators only switch version of miniature circuit breakers of 40 A in provided distribution board complete.	4	NOS.	625.00	2500.00

TOTAL AMOUNT= 211582.00

MEASUREMENT SHEET

Name of Work :-

PROPOSED CONSTRUCTION OF RICE MILL SHED FOR THE TIRODA PRODUCER COMPANY LIMITED, AT- CHIREKHANI, POST-KAWLEWADA , TAH.-TIRORA , DIST.- GONDIA (M.S.) . UNDER Hon. BALASAHEB THACKERAY AGRIBUSINESS RURAL TRANSFORMATION (SMART) PROJECT

MEASUREMENTS

Sr no.	SSR Item No.	Item of Work	Nos.	L	B	D	Quantity	Units
1		2	3	4	5	6	7	
(A) CIVIL WORK OF WH BUILDING								
1	SSR Item No. 21.01 Page No.115 (232.00)	Excavation for foundation in earth, soil of all types, sand gravel and soft murum, including removing the excavated material up to a distance of 50 m beyond the building area and stacking and spreading as directed, dewatering preparing the bed for the foundation and necessary back filing, ramming, watering including shoring and strutting etc complete (Lift upto 1.5 m)						
		<u>Column Pit- C1</u>	18	1.80	1.50	1.80	87.48	Cum
			Total Quantity-				87.48	Cum
2	SSR Item No. 21.40/ Page No.118 (1322.0)	Providing soling using 80 mm size trap metal in 15 cm. layer including filling voids with Crushed sand/grit, ramming. watering etc. complete						
		<u>Column Pit- C1</u>	18	1.80	1.50	0.15	7.29	Cum
			1	26.00	14.00	0.15	54.60	Cum
			Total Quantity-				61.89	Cum
3	SSR Item No. 21.37/ Page No.117 (550.00)	Filing in plinth and floors with contractors material/brought from outside and approved by Engineer incharge in layers of 15 cm to 20 cm including watering and compaction etc complete						
		<u>Below Floor-</u>	1	26.00	14.00	1.20	436.80	Cum
			Total Quantity-				436.80	Cum
4	SSR Item No. 24.01/ Page No.131 (5538.0)	Providing and laying Cast in situ/ Ready Mix cement concrete in M-10 of trap/ granite/ quartzite/ gneiss metal for foundation and bedding including bailing out water, formwork, laying pumping, compacting, roughening them if special finish is to be provided, finishing if required and curing complete with fully automatic micro processor based PLC with SCADA enabled reversible Drum Type mixer/concrete Batch mix plant (Pan mixer) etc complete. With natural sand/V SI quality Artificial Sand						
		<u>For Column Pit-C1</u>	16	1.60	1.30	0.15	4.99	Cum
		<u>Below Floor-</u>	1	26.00	14.00	0.15	54.60	Cum
			Total Quantity-				59.59	Cum

5	SSR Item No. 25.11/ Page No.133 (6666.0)	Providing and laying in situ/ Ready Mix cement concrete M 20 of trap/graniite /quartzile gneiss metal for R.C.C. work in foundations like raft, strip foundations, grillage and footings of R.C.C. columns and steel stanchions etc including balling out water, formwork, laying/pumping cover blocks, compaction and curing roughening the surface if special finish is to be provided (Excluding reinforcement and structural steel) etc. complete, with fully automatic micro processor based PLC with SCADA enabled reversible Drum Type mixer concrete Batch mix plant (Pan mixer) etc. complete. With natural sand/V S. I quality Artificial Sand							
		(SSR Item No. 25.11/ Page No.133) 6666.00							
		<u>For Column Pit-C1</u>	16	1.60	1.30	0.45	14.98	Cum	
				Total Quantity-		14.98	Cum		
6	SSR Item No. 25.31/ Page No.154 (12987.0)	Providing and laying Castin nitu/Reaily Mix cement concrete M-20 of trap/ granite /quartzite gneissmetul for R.C.C. columns as per detailed designs and drawing or as directed including centering, formwork, cover blocks, laying pumping compaction finishing the formed surfaces. with cement mortar 1:3 of sufficient minimum thickness to give a smooth and even surface ar roughening if special finish is to be provided and curing ete complete (Espluding reinforcement and structural steel) with fully automatic micro processor based PLC with SCADA enabled reversible Drum Type mixer/ concrete 8atch mix plant (Pan mixer) etc complete. With natural sand/V.SI quality Artificial Sand							
		Ground Floor R.C.C. Column-C1	14	0.40	0.40	3.00	6.72	Cum	
		Middle Columns	4	0.40	0.40	3.00	1.92	Cum	
					Total Quantity		8.64	Cum	
7	SSR Item No. 25.50/ Page No.135 (11483.0)	Providing and laying Cast in situ/Ready Mix cement concrete M-20 of trap/ granite /quartzite/ gneiss matal for R.C.C. beams and lintels as per detailed designs and drawings or as directed including centering, formwork, cover blocks, laying/pumping, compactionand roughening the surface if special finish is to be provided and cuning etc. complete (Excluding reinforcement and structural steel) with tuby automatic micro processor based PLC with SCADA enabled reversible Drum Type micer/ concrete Batch mix plant (Pan moxer) etc complete With natural sand/V.SI. quality Artificial Sand							
		<u>Plinth Beams</u> <u>Long Side</u>	2	26.00	0.23	0.30	3.59	Cum	
		<u>Deduction for C1</u>	18	0.23	0.23	0.30	0.29	Cum	
		<u>Short Side</u>	6	4.00	0.23	0.30	1.66	Cum	
		<u>For Ramp</u>	1	3.35	0.23	0.30	0.23	Cum	
					Total Quantity		5.48	Cum	

8	SSR Item No. 26.05/ Page No.137 (13111.0)	Providing and laying Cast in situ Ready Mix concrete M-20 of trap/ granite/ quartzitel gneiss metal for R.C.C. chajja as per detalied design and drawings including centering, formwork, cover blocks compacting, curing, finishing and toughening the surface if special finish is to be provided and curing complete. (Excluding reinforcement and structural steel) with fully automatic micro processor based PLC with SCADA enabled reversible Drum Type mixer/ concrete Batch mix plant (Pan mixer) etc complete. With natural sand/V51 quality Artificial Sand							
		(SSR Item No. 26.05/ Page No.137) 13111.0							
		Rolling Shutter	0	3.35	1.20	0.12	0.00	Cum	
		Anti rat Band	2	26.37	0.60	0.12	3.80	Cum	
			2	14.42	0.60	0.12	2.08	Cum	
					Total Quantity	5.87	Cum		
9	SSR em No. 24.16/ Page No.132 (6030.0)	Prodding and laying Cast in situ/Ready Mix cement concrete M-15 of trap/ granite / quartzite /gneiss metal for coping to plinth or parapet , moulded or chamfered as per drawing or as directed including steel centering, plywood/ steel formwork compacting roughening them if special finish is to the provided, finishing uneven and honeycombed surface and curing etc complete The Cement Mortar 1:3 plaster is considered for rendering uneven and honeycombed surface only Newly laid concrete shall be covered by gunny bag, plastic, tarpaulin etc (Wooden centaning will not be allowed)							
		(SSR em No. 24.16/ Page No.132) 6030.00							
		Long walls	2	26.37	0.23	0.15	1.82	Cum	
		Short walls	2	14.42	0.23	0.15	0.99	Cum	
							Total Quantity	2.81	Cum
10	SSR Item No. 26.33/ Page No.139 (71778.0)	Providing and foong in position TMT-FE-500 bar reinforcement of various diameters for RCC pile caps footings, foundations, stats, beams columns, canopies staircase newels chajjas, litels pardis, copings, fins, wiches Jete an per detailed designs, drawings and schedules including cutting bending, hooking the tiers, biriding with wires or tack welding and supporting as required complete							
		R.C.C. Column Footing		7.00	@	300.00	2100.00	Kgs	
		RCC Column		8.00	@	300.00	2400.00	Kgs	
		R.C.C. Beam		6.00	@	300.00	1800.00	Kgs	
		R.C.C. Chajjah		2.00	@	300.00	600.00	Kgs	
		Coping to Plinth		2.00	@	300.00	600.00	Kgs	
							Total Quantity-	7500.00	Kgs
							Total Quantity in MT -	7.50	MT

11	SSR Item No. 27.01/ Page No.144 (7343.00)	Providing second class Burnt Brick masonry with conventional/ I.S. type bricks in cement mortar 1:6 in foundations and plinth of inner walls in plinth edernal walls including bailing out water manually, striking joints on unexposed faces, raking out joints an exposed faces and watering etc. Complete						
		<u>Long walls</u>	2	26.00	0.23	2.00	23.92	Cum
		<u>Deduction for C1</u>	16	0.23	0.23	2.00	1.69	Cum
		<u>Short walls</u>	2	14.42	0.23	2.00	13.27	Cum
						Total Quantity-	37.19	Cum
12	SSR Item No. 32.03/ Page No.153 (257.00)	Providing internal cement plaster 12mm thick in single coat. cement mortar 1:5 without neeru finish to concrete or brick surtaces, in all positions including scaffolding and curing etc.						
		<u>Long side</u>	4	26.37		2.00	210.96	Sqm
		<u>Short walls</u>	4	14.42		2.00	115.36	Sqm
		<u>Gable End</u>	0	15.00		2.00	0.00	Sqm
						Net Quantity-	326.32	Sqm
13	SSR Item No.39.20/ Page No. 180 (4485.0)	Providing and fixing steel window of various sizes as per detaled drawing without hot dip zinc coating without ventilators.						
		M.S. Windows /ventilators	10	0.90		0.60	5.40	Sqm
						Total Quantity-	5.40	Sqm
14	SSR Item No. 40.01/ Page No. 192 (1845.0)	Providing and fixing mild steel grill work for windows, ventilators etc. 20kg/Sqm as per drawing including fixtures, necessary welding and painting with one coats of anticorrssive paint and two coats of all painting complete.						
			10	0.90		0.60	5.40	Sqm
						Total Quantity-	6.48	Sqm
15	SSR Item No. 33.15 Page No. 157 (560.00)	Providing and lying cement concrete flooring 40mm thick with M15cement concrete laid to proper level and slope in alternate bays including compactions, fitting joints, marking lnes to give the appearance of tiles of 30cmx 30cm or other site laid dagonaly square atc. Sishing smooth (with extra cement in any colour as directed and curing etc. complete. With Natural Sand						
		<u>Godown</u>	1	26.00	14.00		364.00	Sqm
		<u>Ramps</u>	1	3.35	3.00		10.05	Sqm
						Total Quantity-	374.05	Sqm
16	(SSR Item No. 35.14/ Page No. 276) 78.00	Providing and applying two coats of waterproof cement paint of approved manufacture and of approved colour to old plastered surfaces including scaffolding if necessary,cleaning and preparing the surface, watering for two days etc. complete.						
						326.32	Sqm	
						Total Quantity-	326.32	Sqm
(B) CIVIL WORK OF ABOVE PLINTH OF WH BUILDING								

17	SSR Item No. 23.04/ Page No.129 (105909.0)	Providing structural steel work in trusses, other similar trussed purlins and members with all tracing gusset plates etc, as per detailed designs and drawings or as directed including cutting, fabricating, hoisting, erecting fixing in position, Making sivated bolted/welded connection and one cont of anticorrosive paint and over 2 costs of oil painting approved quality and thade etc complete						
		For Trusses	7	@	1600.00		11200.00	Kgs
		Purlins & Cleats etc.	6	@	450.00		2700.00	Kgs
					Total Quantity-		13900.00	Kgs
					Total Quantity in MT -		13.90	MT
18	(SSR Item No. 23.02/ Page No.173) 97759.0)	Providing and fabricating structural steel work in rolled sections, fixed with connecting plates or angle cleats in main and cross beams, hip and jack rafters, purlins connecting to truss members and the like, as per detailed designs and drawing or as directed including cutting, fabricating, hoisting, erecting, fixing in position, making riveted/ bolted/ welded connections and one coat of anticorrosive paint and over it two coats of oil painting of approved quality and shade etc. complete.						
		Long walls	2	6.00	60.00	8.00	5760.00	MT
		Short walls	2	2.00	60.00	8.00	1920.00	MT
					Total Quantity-		7680.00	Kgs
					Total Quantity-		7.68	MT
19	SSR Item No. 38.36/ Page No.174 (996.0)	Providing and fixing colour coated Zinalume (R) AZ150 (min 150 gms/sq.mt total on each side) profiled sheets for roofing. The feed material is manufactured out of nominal 045 mm Base Metal Thickness (BMT) (0.5 mm TCT), H strength steel with min 550 MPa yield strength, metalic hot dip coated with Aluminium-Zinc alloy (55% aluminium 43 4% zinc 1.6% silicon) with COLORBOND (R) steel quality super durable polyester paint coat (with inorganic pigment). The paint shall have a total coating thickness of nominal 35 um comprising of nominal 25 um exterior coat on top surface and nominal 10 um reverse coat on back surface Profile sheet shall have nom 950-1050 mm effective cover width and nominal 25-30 mm deep ribs with subtle square fluting in the five pan at nominal 180-250 mm center-to-center. The end rib						
			2	15.00	9.00		270.00	Sqm
			2	27.00	9.00		486.00	Sqm
			2	27.00	9.00		486.00	Sqm
					Total Quantity-		1242.00	Sqm

20	SSR Item No. 39.25 Page No.181 (4730.0)	Providing and Fixing rolling shutter fabricated from steel laths of minimum thickness 0.9 mm with lock plate of 3.15 mm thickness red with 35 x 35 x 5 mm angle section had with sliding bet and handles for both sides, deep MS channel section of eph and thickness not less than 65 mm and 3.15 mm respectively with hood at arrangements MS. Bracket plate 300 x 300 x 3.15 mm made and shape with square bar, suspension shaft of 32 mm diameter, hood cover of M.S. sheet not less than 0.9 mm thickness and of any size at top and safety devices including mechanical gear operation arrangement consisting of worm gear wheels and worms high grade cast iron or mild steel and one coat of red lead primer etc. complete (I.S. 6248:1979) (Without mechanical gear)						
			1	3.50		4.00	14.00	Sqm
			Total Quantity-				14.00	Sqm
21	Building (Bd-R : Roofing and ceiling) Page No. 672 (9702.0)	Turbo Ventilator Supply & Fixing of turbo ventilator with 610 mm throat , having base ring & top plate in stainless steel of 0.8 mm thick, rotated using twin bearings of SKF - 600122 & 600322 permanently lubricated & sealed. Fixed in FRP base plate of 2mm thick clear 1.020 mtr wide & 1.7 mtr long.						
			2	6.00			12.00	Nos
			Total Quantity-				12.00	Nos

RATE ANALYSIS

PROPOSED CONSTRUCTION OF RICE MILL SHED FOR THE TIRODA PRODUCER COMPANY LIMITED, AT- CHIREKHANI,
POST- KAWLEWADA , TAH.-TIRORA , DIST.- GONDIA (M.S.) . UNDER Hon. BALASAHEB THACKERAY AGRIBUSINESS RURAL
TRANSFORMATION (SMART) PROJECT

RATE ANALYSIS.

SR.N O.	SSR Item No.	DESCRIPTION OF ITEM	QTY.	NET LEAD CHARGES	RATE
1	SSR Item No. 21.01 Page No.115 (232.00)	Excavation for foundation in earth, soil of all types, sand, gravel and soft murum , including removing the excavated material up to a distance of 50 m. beyond the building area & stacking and spreading as directed, dewatering, preparing the bed for the foundation and necessary back filling, ramming, watering including shoring and strutting etc. complete. (Lift upto 1.5 m.) By Mechanical Means			232.00
				TOTAL RATE Rs.	232.00 PerCu.M.
2	SSR Item No. 24.01/ Page No.131 (5538.0)	Providing and laying Cast in situ/Ready Mix cement concrete in M-10 of trap/ granite/ quartzite/ gneiss metal for foundation and bedding including bailing out water, formwork, laying/pumping, compacting, roughening them if special finish is to be provided, finishing if required and curing complete, with fully automatic micro processor based PLC with SCADA enabled reversible Drum Type mixer/concrete Batch mix plant (Pan mixer) etc. complete. With fine aggregate (Natural Sand / Crushed sand VSI Grade finely washed etc)			
				0	5538.00
					-110.76
					-332.28
					5094.96
				0.22000	164.99
					36.30
				0.47000	488.73
					229.70
				0.24000	2026.59
					486.38
				0.70000	2114.70
					1480.29
				0.70000	0.00
					0.00
				0.24000	0.00
					0.00
				0.00000	0.00
					0.00
				0.47000	425.00
					199.75
					110.76
				TOTAL RATE Rs.	7638.14 PerCu.M.
3	SSR Item No. 21.40/ Page No.118 (1322.0)	Providing soling using 80 mm size trap metal in 15 cm. layer including filling voids with Crushed sand/grit, ramming, watering etc. complete			
					1322.00
					1322.00
				1.00000	2114.70
					2114.70
				0.15000	2026.59
					303.99

	@ADD DIFF.COST FOR SAND	0.15000	425.00	63.75	
		TOTAL RATE Rs.		3804.44	PerCu.M.
4	SSR Item Providing and laying in situ/Ready Mix cement concrete M-20 of trap / granite /quartzite/ gneiss metal for R.C.C. work in foundations like raft, strip foundations, grillage and footings of R.C.C. columns and steel stanchions etc. including bailing out water, formwork, laying/pumping cover blocks, compaction and curing roughening the surface if special finish is to be provided (Excluding reinforcement and structural steel) etc. complete, with fully automatic micro processor based PLC with SCADA enabled reversible Drum Type mixer/ concrete Batch mix plant (Pan mixer) etc. complete. With fine aggregate (Natural Sand / Crushed sand VSI Grade finely washed etc)				
				6666.00	
	DEDUCT 2% OF LABOUR AMENITIES/CESS			-133.32	
	DEDUCT 6% FOR NON SCADA			-399.96	
				6132.72	
	ADD LEAD CHARGES FOR CEMENT	0.35000	164.99	57.75	
	ADD LEAD CHARGES FOR SAND	0.42500	488.73	207.71	
	ADD LEAD CHARGES FOR CR METAL	0.85000	2026.59	1722.60	
	@ADD DIFF.COST FOR 20MM METAL	0.57000	0.00	0.00	
	@ADD DIFF.COST FOR 12MM METAL	0.28000	0.00	0.00	
	@ADD DIFF.COST FOR SAND	0.42500	425.00	180.63	
	ADD 2% OF LABOUR AMENITIES/CESS			133.32	
		TOTAL RATE Rs.		8434.73	PerCu.M.
5	SSR Item Providing and laying Cast in situ/Ready Mix cement concrete M-20 of trap / granite /quartzite/ gneiss metal for R.C.C. columns as per detailed designs and drawing or as directed including centering, formwork, cover blocks, laying/pumping, compaction finishing the formed surfaces with cement mortar 1:3 of sufficient minimum thickness to give a smooth and even surface or roughening if special finish is to be provided and curing etc. complete,(Excluding reinforcement and structural steel). with fully automatic micro processor based PLC with SCADA enabled reversible Drum Type mixer/ concrete Batch mix plant (Pan mixer) etc. complete. With fine aggregate (Natural Sand / Crushed sand VSI Grade finely washed etc)				
				12987.00	
	DEDUCT 2% OF LABOUR AMENITIES/CESS			-259.74	
	DEDUCT 6% FOR NON SCADA			-779.22	
				11948.04	
	ADD LEAD CHARGES FOR CEMENT	0.35000	164.99	57.75	
	ADD LEAD CHARGES FOR SAND	0.42500	488.73	207.71	
	ADD LEAD CHARGES FOR CR METAL	0.85000	2026.59	1722.60	
	@ADD DIFF.COST FOR 20MM METAL	0.57000	0.00	0.00	
	@ADD DIFF.COST FOR 12MM METAL	0.28000	0.00	0.00	

	@ADD DIFF.COST FOR SAND	0.42500	425.00	180.63
	ADD 2% OF LABOUR AMENITIES/CESS			259.74
		TOTAL RATE Rs.		14376.47 PerCu.M.
6	SSR Item Providing and laying Cast in situ/Ready Mix cement concrete M- No. 20 of trap / granite /quartzite/ gneiss metal for R.C.C. beams and 25.50/ lintels as per detailed designs and drawings or as directed Page including centering, formwork, cover blocks, laying/pumping, No.135 compactionand roughening the surface if special finish is to be (11483.0) provided and curing etc. complete. (Excluding reinforcement and structural steel). with fully automatic micro processor based PLC with SCADA enabled reversible Drum Type mixer/ concrete Batch mix plant (Pan mixer) etc. complete. With fine aggregate (Natural Sand / Crushed sand VSI Grade finely washed etc)			11483.00
	DEDUCT 2% OF LABOUR AMENITIES/CESS			-229.66
	DEDUCT 6% FOR NON SCADA			-688.98
				10564.36
	ADD LEAD CHARGES FOR CEMENT	0.35000	164.99	57.75
	ADD LEAD CHARGES FOR SAND	0.42500	488.73	207.71
	ADD LEAD CHARGES FOR CR METAL	0.85000	2026.59	1722.60
	@ADD DIFF.COST FOR 20MM METAL	0.57000	0.00	0.00
	@ADD DIFF.COST FOR 12MM METAL	0.28000	0.00	0.00
	@ADD DIFF.COST FOR SAND	0.42500	425.00	180.63
	ADD 2% OF LABOUR AMENITIES/CESS			229.66
		TOTAL RATE Rs.		12962.71 PerCu.M.
7	SSR em Prodding and Mying Cast in situ/Ready Mix cement concrete M- No. 15 of trap/ granite/quartzite/gneiss metal for coping to plinth or 24.16/ parapet, moulded or chamfered as per drawing or as directed Page including steel centering, plywood/ steel formwork compacting No.132 roughening them if special tirish is to the provided, finishing (6030.0) uneven and honeycombed surface and curing etc complets The Camant Mortar 13 plaster is consideraid for rendering uneven and honeycombed surface only Newly laid contiste shall be covered by gimny bag, plastic, tarpaulin etc (Woodet centaning will not be allowed)			6030.00
	DEDUCT 2% OF LABOUR AMENITIES/CESS			-120.60
	DEDUCT 6% FOR NON SCADA			-361.80
				5547.60
	ADD LEAD CHARGES FOR CEMENT	0.35000	164.99	57.75
	ADD LEAD CHARGES FOR SAND	0.42500	488.73	207.71
	ADD LEAD CHARGES FOR CR METAL	0.85000	2026.59	1722.60
	@ADD DIFF.COST FOR 20MM METAL	0.57000	0.00	0.00
	@ADD DIFF.COST FOR 12MM METAL	0.28000	0.00	0.00
	@ADD DIFF.COST FOR SAND	0.42500	425.00	180.63
	ADD 2% OF LABOUR AMENITIES/CESS			120.60

		TOTAL RATE Rs.	7836.89	PerCu.M.
8	SSR Item	Providing and laying Cast in situ Ready Mix cement concrete M-20 of trap/ granite/ quartzitel gneiss metal for R.C.C. chajja as per detailed design and drawings including centering, formwork, cover blocks compacting, curing. finishing and toughening the surface if special finish is to be provided and curing complete. (Excluding reinforcement and structural steel) with fully automatic micro processor based PLC with SCADA enabled reversible Drum Type mixer/ concrete Batch mix plant (Pan mixer) etc complete. With natural sand/Vs1 quality Artificial Sand		
	No.	20 of trap/ granite/ quartzitel gneiss metal for R.C.C. chajja as per		
	26.05/	detailed design and drawings including centering, formwork,		
	Page	cover blocks compacting, curing. finishing and toughening the		
	No.137	surface if special finish is to be provided and curing complete.		
	(13111.0)	(Excluding reinforcement and structural steel) with fully automatic micro processor based PLC with SCADA enabled reversible Drum Type mixer/ concrete Batch mix plant (Pan mixer) etc complete. With natural sand/Vs1 quality Artificial Sand		
			13111.00	
			-262.22	
			-786.66	
			12062.12	
			DEDUCT 2% OF LABOUR AMENITIES/CESS	
			-262.22	
			DEDUCT 6% FOR NON SCADA	
			-786.66	
			12062.12	
			ADD LEAD CHARGES FOR CEMENT	
		0.35000	164.99	57.75
			ADD LEAD CHARGES FOR SAND	
		0.42500	488.73	207.71
			ADD LEAD CHARGES FOR CR METAL	
		0.85000	2026.59	1722.60
			@ADD DIFF.COST FOR 20MM METAL	
		0.57000	0.00	0.00
			@ADD DIFF.COST FOR 12MM METAL	
		0.28000	0.00	0.00
			@ADD DIFF.COST FOR SAND	
		0.42500	425.00	180.63
			ADD 2% OF LABOUR AMENITIES/CESS	
			262.22	
			TOTAL RATE Rs.	14493.03
				PerCu.M.
9	SSR Item	Providing and fixing in position TMT - FE - 500 bar reinforcement of various diameters for R.C.C. pile caps, footings, foundations, slabs, beams columns, canopies, staircase, newels, chajjas, lintels pardis, copings, fins, arches etc. as per detailed designs, drawings and schedules. including cutting, bending, hooking the bars, binding with wires or tack welding and supporting as required complete.		
	No.	of various diameters for R.C.C. pile caps, footings, foundations,		
	26.33/	slabs, beams columns, canopies, staircase, newels, chajjas,		
	Page	lintels pardis, copings, fins, arches etc. as per detailed designs,		
	No.139	drawings and schedules. including cutting, bending, hooking the		
	(71778.0)	bars, binding with wires or tack welding and supporting as required complete.		
			71778.00	
			ADD LEAD CHARGES FOR STEEL	
		1.00000	164.99	164.99
			TOTAL RATE Rs.	71942.99
				PerM.T.
10	SSR Item	Providing second class Burnt Brick masonry with conventional/ I.S. type bricks in cement mortar 1:6 in foundations and plinth of inner walls/ in plinth external walls including bailing out water manually , striking joints on unexposed faces, raking out joints on exposed faces and watering etc. Complete.		
	No.	I.S. type bricks in cement mortar 1:6 in foundations and plinth of		
	27.01/	inner walls/ in plinth external walls including bailing out water		
	Page	manually , striking joints on unexposed faces, raking out joints on		
	No.144	exposed faces and watering etc. Complete.		
	(7343.00)			
			7343.00	
			DEDUCT 2% OF LABOUR AMENITIES/CESS	
			-146.86	
			7196.14	
			ADD LEAD CHARGES FOR CEMENT	
		0.07900	164.99	13.03
			ADD LEAD CHARGES FOR SAND	
		0.32000	488.73	156.39
			ADD LEAD CHARGES FOR BRICKS	
		0.47500	436.28	207.23
			@ADD DIFF.COST FOR SAND	
		0.32000	425.00	136.00
			@ADD DIFF.COST FOR BRICKS	
		475.000	-2.00	-332.50

LEAD, ROYALTY STATEMENT AND LABTESTING SHEETS

Statement of Frequency and amount of Testing Charges

PROPOSED CONSTRUCTION OF RICE MILL SHED FOR THE TIRODA PRODUCER COMPANY LIMITED, AT- CHIREKHANI, POST-KAWLEWADA , TAH.-TIRORA , DIST.- GONDIA (M.S.) . UNDER Hon. BALASAHEB THACKERAY AGRIBUSINESS RURAL TRANSFORMATION (SMART) PROJECT

Sr No	Item of work	Quantity	Unit	Rate of Consumption	Qty of Material	Test Details			Rate of Testing	Amount
						Test required	Frequency	No. of Test req.		
1	2	3	4	5	6	7	8	9	10	11
1	Cement Concrete									
	M10	0.00	CUM	1.00	0.00	Compressive Strength	Upto 5 Cum – 1 set	30	690.00	20700.00
	M15	0.00	CUM	1.00	0.00		6-15 – 2 sets			
	M20	0.00	CUM	1.00	0.00		16-30 – 3 sets			
				Total	0.00		31-50 – 4 sets			
					51 & Above – 4 sets + 1 additional 50 Cum or part there of					
2	Cement									
	M10	0.00	CUM	3.00	0	Initial seating time	One test for each consignment of 50 MT (1000 bags) or part thereof.	3	3770.00	11310.00
	M15		CUM	6.27	0	Final setting time				
	M20	0.00	CUM	7.10	0	Specific Gravity				
				Total Bag	0	Soundness				
						Fineness moduls				
3	Sand									
	M10	0.00	CUM	0.445	0.00	Fineness Modules	At the beginning & if there is change in source	3	1380.00	4140.00
	M15	0.00	CUM	0.425	0.00	Silt & Clay Content				
	M20	0.00	CUM	0.425	0.00					
			Total	0.00						
4	C.B.Metal									
	M10	0.00	CUM	0.94	0.00	Water Absorption	One test per 200 Cum or part hereof	3	2600.00	7800.00
	M15	0.00	CUM	0.85	0.00	Specific Gravity				
	M20	0.00	CUM	0.85	0.00	Impact Value				
				Total	0.00	Crushing Value				
5	Bricks		CUM	500	0.00	Water Absorption, Compressive Strength & Efflorescence (Set of 5 Bricks)	At the beginning & if there is change in source	4	2175	8700
				Total	0.00					
6	Steel (upto 16 mm)	0.00	M.T.	1	0.00	Tensile Strength, %Elongation, Yield stress, Wt. per RMT, bend, rebend, proof tests	One test for every 5.0 MT & part thereof for each diameter	2	1275.00	2550
			M.T.	1		Resistance to applied Voltage. (1 Hr. Test) (Set of 2 Bars)		2	1115.00	2230
7	Soft murum	0.00	Cum	1	0.00	Liquid limit & plastic limit	Per test	4	1170.00	4680.00
									Total Rs.	62110.00
For Other Government Organisation Rate Will Be Twice										

PROPOSED CONSTRUCTION OF RICE MILL SHED FOR THE TIRODA PRODUCER COMPANY LIMITED, AT- CHIREKHANI,
POST- KAWLEWADA , TAH.-TIRORA , DIST.- GONDIA (M.S.) . UNDER Hon. BALASAHEB THACKERAY AGRIBUSINESS
RURAL TRANSFORMATION (SMART) PROJECT

LEAD CHART

SR.NO.	MATERIAL	TYPE OF MATERIAL	LOCATION OF QUARRY	LEAD IN KM.	LEAD CHARGES	INITIAL LEAD CHARGES	NET LEAD CHARGES.
1	CEMENT	MANUAL	TIRORA	5.00	164.99	0.00	164.99
2	SAND	MACHINE	ARJUNI	20.00	488.73	0.00	488.73
3	CR METAL	MACHINE	Panchgaon	150.00	2026.59	0.00	2026.59
4	40MM METAL CB	MACHINE	Panchgaon	150.00	2114.70	0.00	2114.70
5	STEEL	MANUAL	TIRORA	5.00	164.99	0.00	164.99
6	BRICKS	MANUAL	CHIREKHANI	3.00	436.28	0.00	436.28
7	MURUM-HARD	MACHINE	M.Q.	5.00	252.22	0.00	252.22
8	SOLLING	MACHINE	LOCAL	10.00	117.03	0.00	117.03

PROPOSED CONSTRUCTION OF RICE MILL SHED FOR THE TIRODA PRODUCER COMPANY LIMITED, AT-CHIREKHANI, POST- KAWLEWADA , TAH.-TIRORA , DIST.- GONDIA (M.S.) . UNDER Hon. BALASAHEB THACKERAY AGRIBUSINESS RURAL TRANSFORMATION (SMART) PROJECT

ROYALTY CHARGES STATEMENT

Sr No.	Item	Quantity	Consumption / Unit.	Material quantity
1	MATERIAL:- METAL 40 MM & ABOVE			
	Supplying trap/granite/quartzite/gneiss stone metal of required size by bringing the boulders / Rubble at the road side breaking them to required gradation including conveying the boulders /Rubble and stacking the broken metal etc. complete . (Prior approval of sample stack of broken metal by the Ex. Engineer is necessary the date of approval will form part of the measurements) a)40 mm Metal, By breaking Boulders (Hand broken).	161.890	1.00000	161.890
2	MATERIAL : SAND			
	Providing and laying Cast in situ/Ready Mix cement concrete in M-15	26.815	0.44000	11.798
	Providing and laying Cast in situ/Ready Mix cement concrete in M-20	34.965	0.42000	14.685
	Providing and laying Cast in situ/Ready Mix cement concrete in M-10	59.592	0.46200	27.532
GRAND TOTAL FOR MATERIALS				54.015
3	MATERIAL : METAL 20MM			
	Providing and laying Cast in situ/Ready Mix cement concrete in M-15	26.815	0.88000	23.597
	Providing and laying Cast in situ/Ready Mix cement concrete in M-20	34.965	0.84000	29.371
	Providing and laying Cast in situ/Ready Mix cement concrete in M-10	59.592	0.92400	55.063
	GRAND TOTAL FOR ALL MATERIALS			

ROYALTY CHARGES

SR.NO	MATERIAL	TOTAL QUANTITY	ROYALTY RATE	ROYALTY AMOUNT
1	METAL 40 MM & ABOVE	161.890	216.18	34997.38
2	SAND	54.015	237.37	12821.58
3	METAL 20 MM	108.030	216.18	23353.99

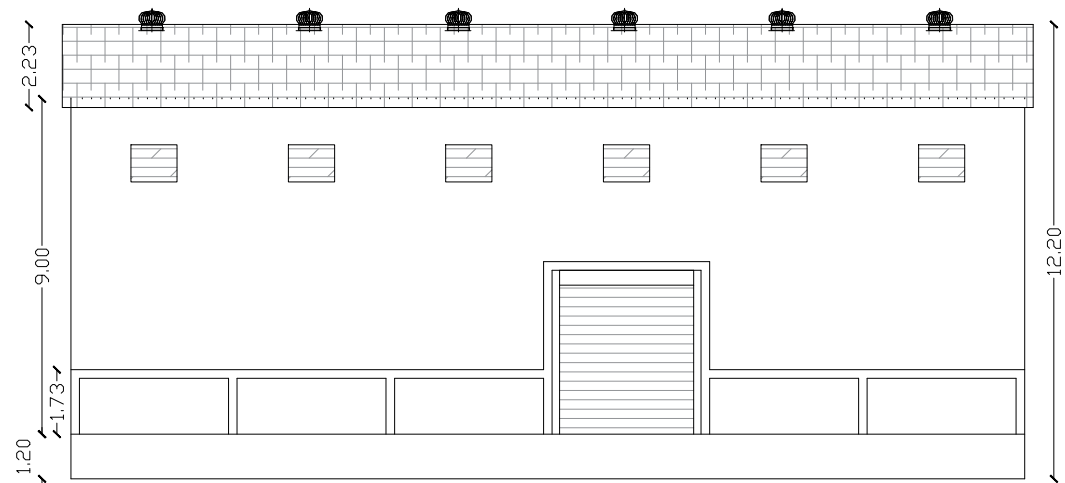
TOTAL:- 71172.95

SAY RS 71173

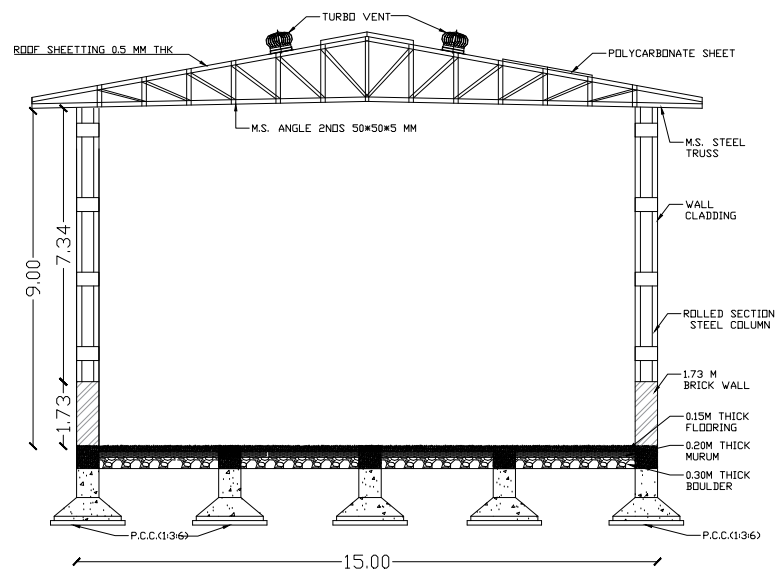
PROPOSED CONSTRUCTION OF RICE MILL SHED FOR THE TIRODA PRODUCER COMPANY LIMITED, AT
 CHIREKHANI, POST- KAWLEWADA , TAH.-TIRORA , DIST.- GONDIA (M.S.) . UNDER Hon.
 BALASAHEB THACKERAY AGRIBUSINESS RURAL TRANSFORMATION (SMART) PROJECT

DIFF.COST OF MATERIAL

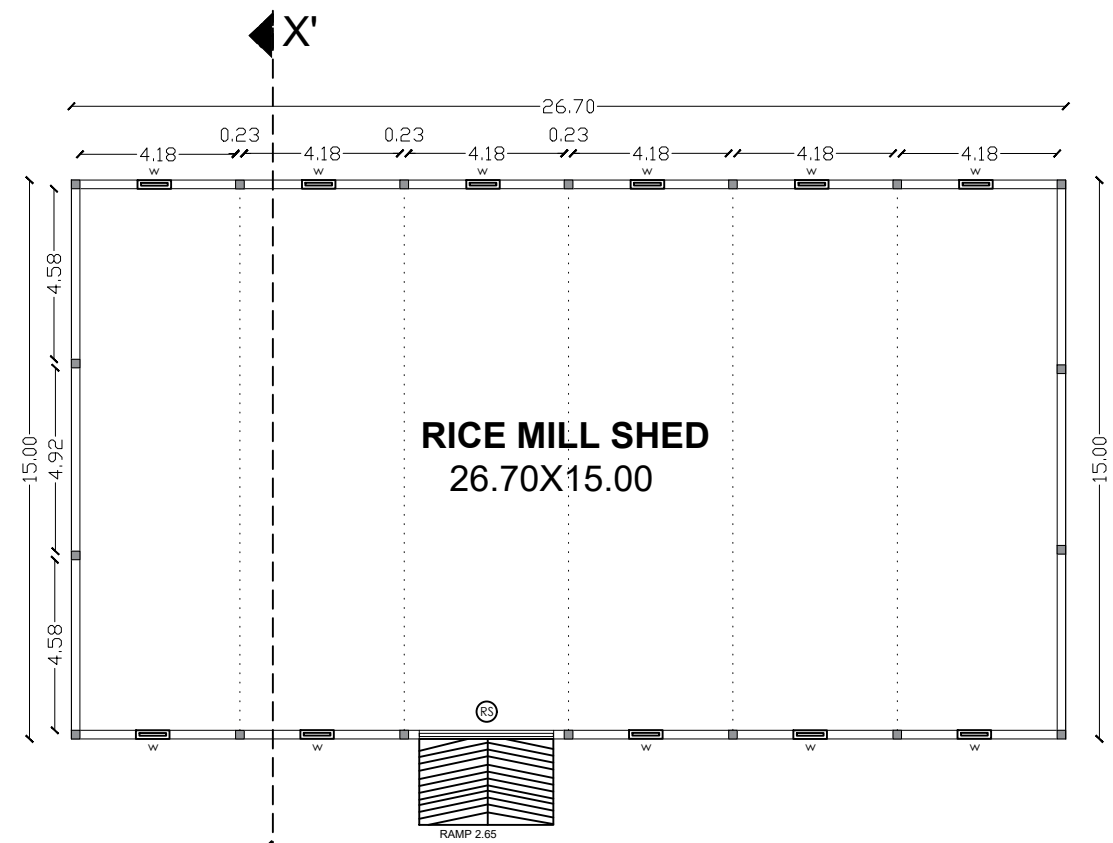
SR.NO.	MATERIAL	RATE AS PER SSR OF 2021- 22	MARKET RATE	EXCESS	LESS	REMARKS/ EFFECTIVE DATE
1	40MM METAL CB	865.00	800.00	-65.00	0.00	Rate As On 06/08/21
2	20MM METAL	996.00	996.00	0.00	0.00	Rate As On 06/08/21
3	12MM METAL	996.00	996.00	0.00	0.00	Rate As On 06/08/21
4	SAND	1575.00	2000.00	425.00	0.00	Rate As On 06/08/21
5	MURUM-HARD	283.00	283.00	0.00	0.00	Rate As On 06/08/21
6	BRICKS	8.00	6.00	-2.00	0.00	Rate As On 06/08/21
6	CR SAND	1220.00	700.00	-520.00	0.00	Rate As On 06/08/21



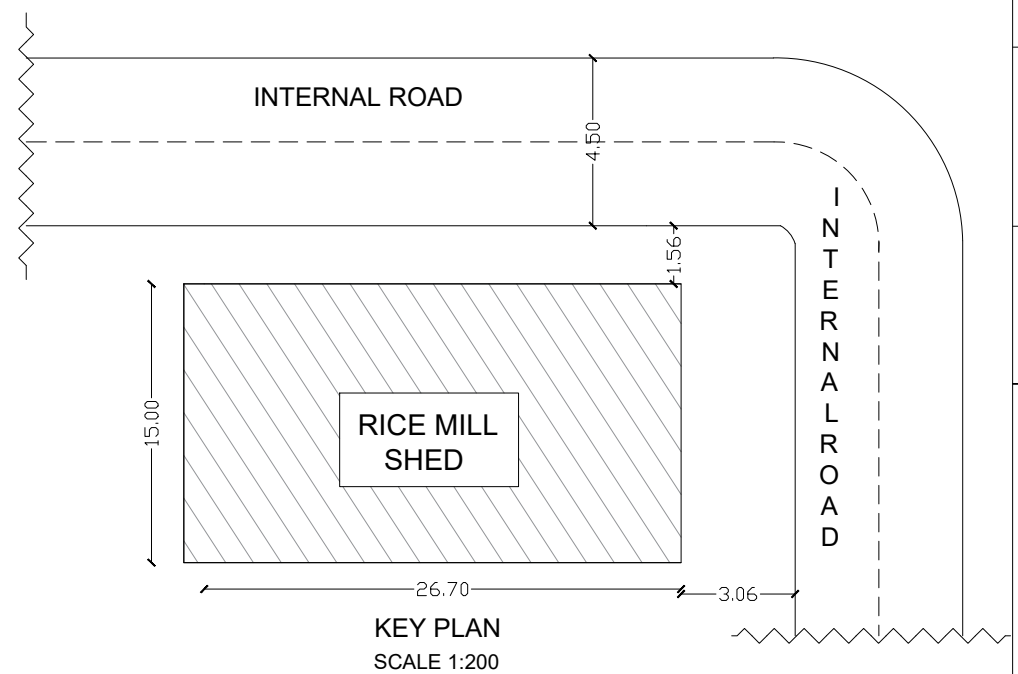
ELEVATION
SCALE 1:100



SECTION X-X'
SCALE 1:100



PROPOSED RICE MILL SHED PLAN
SCALE 1:100



KEY PLAN
SCALE 1:200

NOTE
1. ALL DIMENSIONS ARE IN MILLIMETERS UNLESS OTHERWISE SPECIFIED
2. ALL DIMENSIONS SHALL BE CHECKED AND CORELATED WITH THE RELEVANT ARCHITECTURAL & SERVICES DRAWINGS AND ANY AMBIGUITY SHALL BE IMMEDIATELY BROUGHT TO THE NOTICE OF THE ARCHITECTS BEFORE COMMENCEMENT OF THE WORK AT SITE.

SCHEDULE OF OPENING

SN	TYPE	NOS	WIDTH	HEIGHT	SILL	LINTEL	REMARK
1	RS	1	3.5	4500	00	4500	R.SHUTTER

STATEMENT OF AREA

PLOT AREA	SQM
BUILTUP AREA OF SHED FOR MACHINE/ RICE MILL (COMMERCIAL)	400.00 SQ.MT. [4309.0 SQ.FT.]

(CONTAINING GOODS) ----- M.T.

DRG TITLE :- RICE MILL SHED

PROJECT TITLE :

PROPOSED CONSTRUCTION OF RICE MILL SHED FOR THE TIRODA PRODUCER COMPANY LIMITED, AT- CHIREKHANI, PO.- KAWLEWADA , TAH.-TIRORA, DIST.- GONDIA (M.S.). UNDER Hon. BALASAHEB THACKERAY AGRIBUSINESS RURAL TRANSFORMATION (SMART) PROJECT



NOS	04
SCALE	AS MENTIONED
DATE	

OWNER'S SIGN

ENGINEER SIGN

Er. Vishal M. Tembhare
D.C.E., B.E. (Civil)
Office-New Laxmi Nagar,
Gondia

THIS DRAWING IS THE PROPERTY OF THE ARCHITECT AND NOT TO BE COPIED OR REPRODUCED WITHOUT PERMISSION